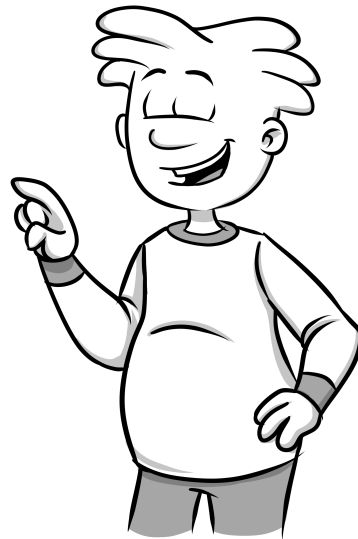


THE MANHOOD MANUAL™

THE POLITE GENTLEMAN CRYPTOGRAM

Use the letters provided to solve this cryptogram. The only clue I'll provide you is this, Dad's quote from *The Manhood Manual – A Comic Adventure* about being a polite gentleman. Good luck!



A	B	C	D	E	F	G	H	I	J	K	L	M	N	O	P	Q	R	S	T	U	V	W	X	Y	Z

<input type="text" value="A"/>	<input type="text"/>	<input type="text"/>	<input type="text" value="A"/>												
Z	K	L	O	R	G	V	T	V	M	G	O	V	N	Z	M

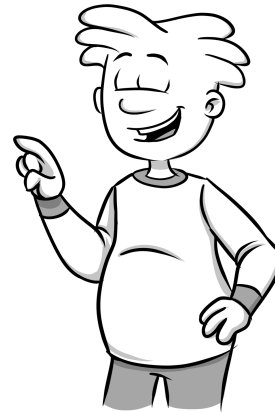
<input type="text"/>	<input type="text" value="S"/>	<input type="text" value="A"/>	<input type="text"/>	<input type="text" value="A"/>	<input type="text"/>	<input type="text"/>	<input type="text"/>	<input type="text"/>	<input type="text"/>	<input type="text" value="S"/>			
R	H	Z	N	Z	M	D	S	L	P	M	L	D	H

<input type="text"/>	<input type="text"/>	<input type="text"/>	<input type="text"/>	<input type="text"/>	<input type="text"/>	<input type="text" value="A"/>	<input type="text"/>	<input type="text"/>	<input type="text"/>	<input type="text"/>	
S	L	D	G	L	K	O	Z	B	G	S	V

<input type="text" value="A"/>	<input type="text"/>	<input type="text"/>	<input type="text"/>	<input type="text"/>	<input type="text"/>	<input type="text"/>	<input type="text"/>	<input type="text"/>	<input type="text"/>	<input type="text"/>	<input type="text"/>	<input type="text" value="S"/>	<input type="text"/>	<input type="text"/>			
Z	X	X	L	I	W	R	L	M	Y	F	G	W	L	V	H	M	G

www.manhoodmanual.com

THE POLITE GENTLEMAN CRYPTOGRAM



THE SOLUTION!

A	B	C	D	E	F	G	H	I	J	K	L	M	N	O	P	Q	R	S	T	U	V	W	X	Y	Z
Z	Y	X	W	V	U	T	S	R	Q	P	O	N	M	L	K	J	I	H	G	F	E	D	C	B	A

A	P	O	L	I	T	E	G	E	N	T	L	E	M	A	N
Z	K	L	O	R	G	V	T	V	M	G	O	V	N	Z	M

I	S	A	M	A	N	W	H	O	K	N	O	W	S
R	H	Z	N	Z	M	D	S	L	P	M	L	D	H

H	O	W	T	O	P	L	A	Y	T	H	E
S	L	D	G	L	K	O	Z	B	G	S	V

A	C	C	O	R	D	I	O	N	B	U	T	D	O	E	S	N	T
Z	X	X	L	I	W	R	L	M	Y	F	G	W	L	V	H	M	G